

TERPENES TEST REPORT

Client name: BioBloom GmbH.

Type of sample: oil

Date of delivery: 16-01-2018

Humidity:

Sample: 6% BioBloom Drops L1P0512

Comments:

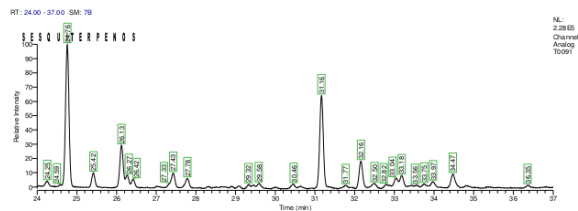
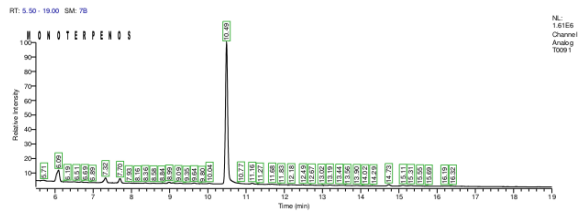
Date of analysis: 17-01-2018

N.I laboratory: M18-T0091

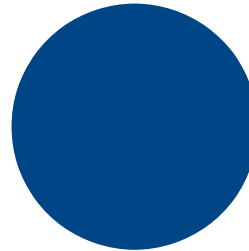
MONOTERPENES

Alpha-Pinene	0.058%
Camphene	N.D.
(-)-beta-Pinene	N.D.
Beta-Myrcene	N.D.
delta-3-Carene	N.D.
Alpha-Terpinene	N.D.
p-Cymene	N.D.
d-Limonene	N.D.
Eucaliptol	--
Cis-Ocimene	N.D.
Gamma-Terpinene	N.D.
Trans-Ocimene	N.D.
Terpinolene	N.D.
Linalool	N.D.
(-)-Isopulegol	N.D.
Geraniol	N.D.

CHROMATOGRAM



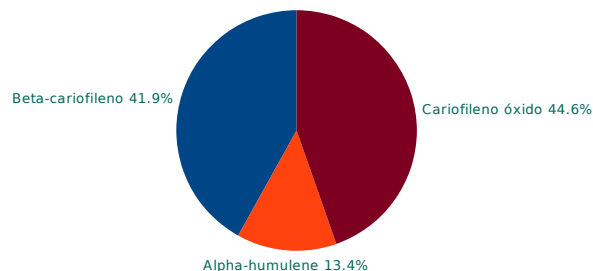
MONOTERPENES RELATIVE RATIO



SESQUITERPENES

Beta-caryophyllene	0.125%
Alpha-humulene	0.040%
Cis-Nerolidol	N.D.
Trans-nerolidol	N.D.
Caryophyllene oxide	0.133%
(-)-Guaial	N.D.
(-)-alpha-Bisabolol	N.D.

SESQUITERPENES RELATIVE RATIO



N.D.=<0.04%

The total or partial reproduction of this document is not allowed without the permit of the CANNA Foundation. Results are limited to the analyzed sample not being applicable to the whole batch or variety. The purpose of the data contained in this report is strictly for informational purposes and should not be used for treatment or prevention of any symptoms or illness.